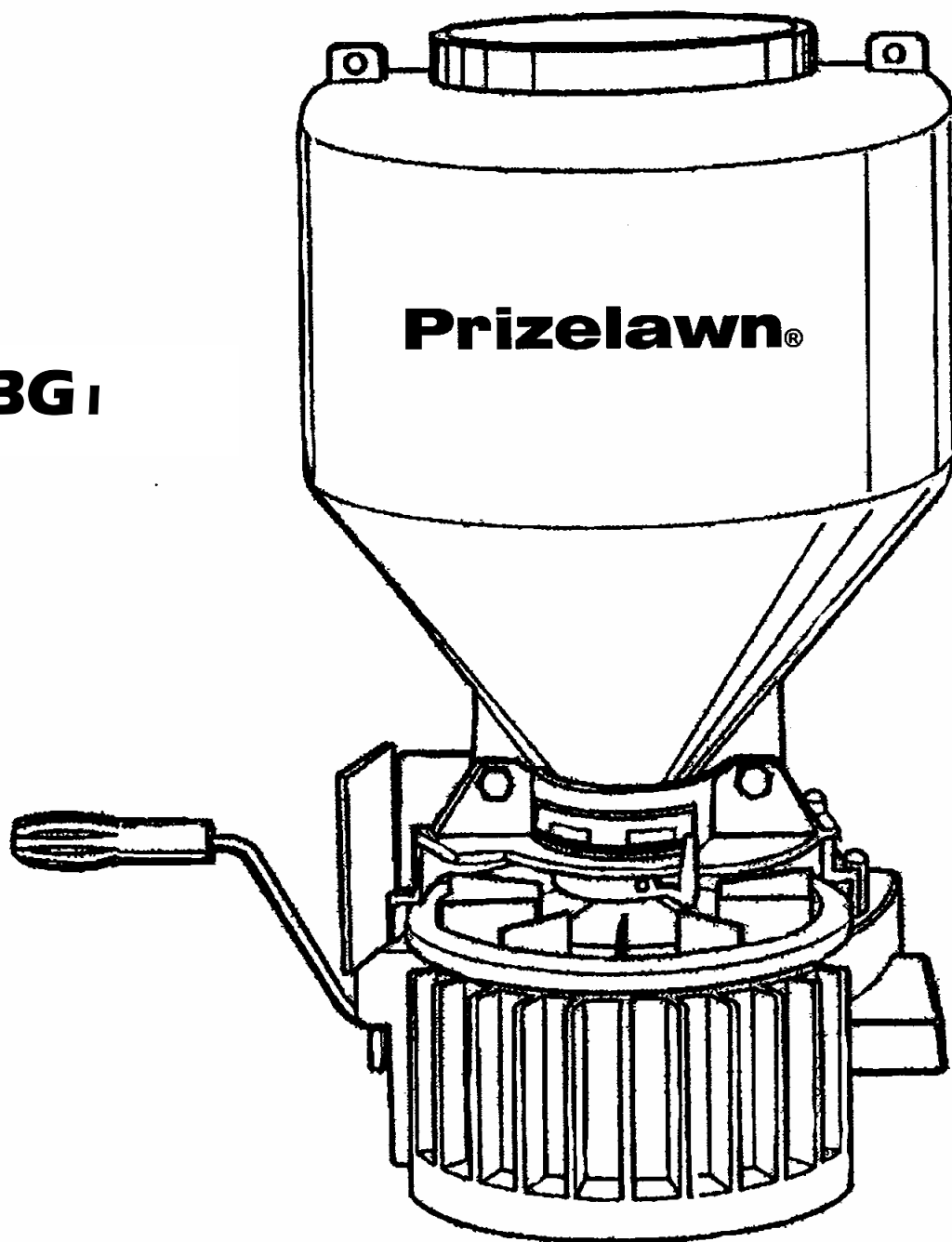


Prizelawn® BG1

COMMERCIAL PORTABLE SPREADER

MODEL BG1



OWNER'S MANUAL

SAFETY INSTRUCTIONS

Training

- Read the owner's manual carefully. Become familiar with the controls and know how to operate your spreader.
- Do not allow children to use your spreader. Never allow adults to use the spreader without proper instructions.
- Do not bend at the waist. Bend only at the knees and support yourself as required to ensure personal safety.
- Keep the treatment area clear of people and pets, especially small children.
- Use spreader only as described in this manual.
- Do not operate spreader if it has been dropped or damaged in any manner. Always have damage repaired before use.
- Do not use accessory attachments that are not recommended by the manufacturer. Use of such attachments may be hazardous.

Preparation and Safety

- Always wear safety glasses or eye shields when using your spreader.
- Dress properly. Wear only closed toe shoes with good traction. Do not operate spreader when barefoot or wearing sandals.
- Wear long-sleeved clothes that are snug fitting. Avoid wearing loose clothing.
- Wear either tightly cuffed or cuffless pants.
- Wear non-slip gloves during operation. Wear a respirator if appropriate for the type of material being spread.
- Long hair should be tied back and kept away from the spreader.
- Make direction adjustments before using spreader.
- Use only in daylight or good artificial light.
- Read all instructions of the chemical manufacturer.

Caution

- Keep your eyes and mind on the job at hand. Do not become distracted.
- Always be sure of footing. Use extra caution in wet or slippery areas. WALK - DON'T RUN!
- **WARNING:** Chemicals or materials which can be harmful to individuals or the environment should be avoided. Follow all warnings of the chemical manufacturer.

Maintenance and Storage

- Check all fasteners at frequent intervals for proper tightness to be sure the spreader is in safe working condition.
- Keep all safety devices in place and working.

Customer Responsibilities

- Read and observe the Safety Rules
- Follow a regular schedule in maintaining, caring for and using your spreader.
- Follow the instructions under the Maintenance and Storage sections of this manual..

ASSEMBLY

The **Prizelawn® BG I** carry strap and crank handle are the only items user attached before operation. Remove the hopper lid. The crank handle and carry strap are located inside.

Mounting the Crank Handle

- Place the spreader on its left side as viewed from the operator's position. See Figure A.
- Find the threaded crankshaft and affix the crank handle in a clockwise motion. Tighten the jamnut against the crank handle.

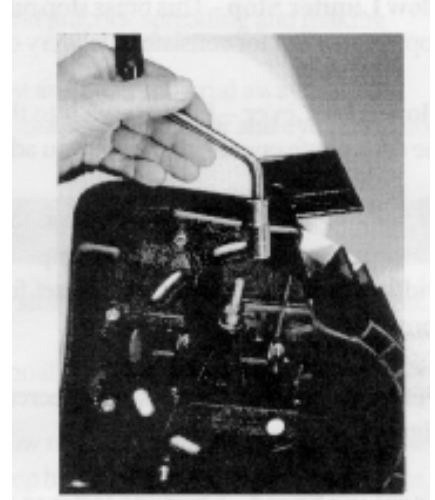


Figure A

Carry Strap

- Stand the spreader upright at about waist level on a table, bench or stand.
- Adjust the strap to its longest reach.
- Attach the strap hook to the top right eye on the hopper as viewed from the operator's position.
- With the back of the spreader facing your chest, slip the strap over your right shoulder and across your back.
- Set strap hook under spreader housing. See Figure B.
- With the spreader fitted, crank the handle and determine if the spreader is set at a comfortable height. Remove the spreader, adjust the strap and try again until you are comfortable with the fit and function.

Lubrication Point

- With the spreader on its right side (crank handle side up), observe the small oil hole in the gearcase.
- Add a few drops of light oil every four hours of operation. See Figure C.



Figure B



Figure C

Adjusting the Spreader

Your spreader is adjustable for both volume and direction. Four factors determine the volume and direction. They are:

Flow Limiter Stop (Rate Adjustment) & Flow Rate Lever

This brass stop nut allows you to limit the hopper opening for consistent delivery of material to the impeller. Look down into the hopper to observe how the drop chute opening varies as you adjust the flow rate lever against the flow limiter stop.

Directional Lever - This control adjusts the point where the material is to be deposited on the impeller and consequently, the width of spread. The lever can be set for center, left or right spreading. See Figure D.

Deflector Shield - Increases or decreases the width of spread. See Figure E.

Cranking Speed - Cranking faster or slower affects volume and coverage.

Spread Rate Table

Flow Rate Adjuster setting #3 (middle)

| Cranking RPM | Pellitized Fertilizer | Pounds Delivered per Minute |
|--------------|-----------------------|-----------------------------|
| 55 - 60 | Brand "O" | 4.4 |
| 55 - 60 | Brand "V" | 3.75 |
| 55 - 60 | Grass Seed | 0.7 |

Flow Rate Adjuster setting #6 (full open)

| Cranking RPM | Pellitized Fertilizer | Pounds Delivered per Minute |
|--------------|-----------------------|-----------------------------|
| 55 - 60 | Brand "O" | 7.44 |
| 55 - 60 | Brand "V" | 10.0 |
| 55 - 60 | Grass Seed | 2.0 |

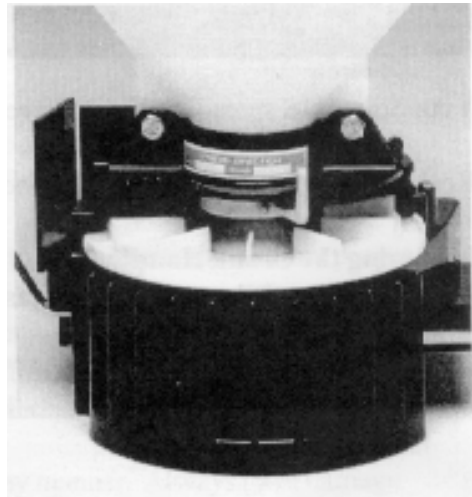


Figure D

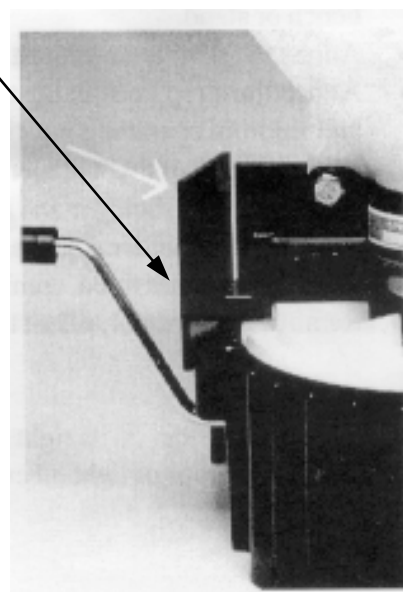


Figure E

Pelleted fertilizer is usually thrown about 10 - 12 feet in front of the operator and about 5 - 7 feet on each side at 55 - 60 rpm. Grass seed usually carries 5 - 6 feet forward and 4 - 5 feet to the side. A walking speed of 2.5 to 3.0 feet per second is suggested.

Please test the product you are spreading to achieve the manufacturer's recommended coverage.

FILLING THE HOPPER

- Move flow rate lever to zero position.
- Set spreader on a flat surface.
- Remove hopper lid.
- Fill Hopper. For the initial use it is wise to partly fill the hopper and practice spreading and making adjustments.
- Replace hopper lid. The lid prevents spillage and helps keep dust and other material away from the operator. When spreading chemicals be sure to wear protective clothing, respirator and eye protection.
- Do not load hopper while carrying spreader.

OPERATING INSTRUCTIONS

- Set spreader on a surface to safely and conveniently fit the carry strap as outlined in the assembly section.
- Set deflector to the desired position.
- Adjust spreading direction lever to the desired position. Directional changes can also be made simply by walking in the desired direction.,
- While turning the crank handle with your right hand, move the flow rate lever with the left hand to adjust flow rate. Flow limiter stop will control flow rate. **CAUTION:** Keep hands away from the rotating impeller.
- After use, turn the flow rate lever to the closed (zero) position. Crank the handle several times to make sure no material residue is attached to impeller. Clean the whole unit thoroughly using soap

OTHER OPERATING SUGGESTIONS

- Walking speed should be 2.5 - 3.0 feet per second.
- Crank handle speed 55 - 65 rpm.
- Each complete revolution of the crank handle causes the impeller to rotate 7½ turns.
- Experiment to find the best setting.
- In windy conditions, plan your work so the wind is behind you if possible.

STORAGE

- Empty hopper of contents. Store or dispose of contents properly and in accordance with the chemical manufacturer's instructions.
- Check all fasteners for proper tightness.
- Clean unit with soap and water.
- Dry.
- Store in a safe place.

PARTS LIST FOR MODEL BG1

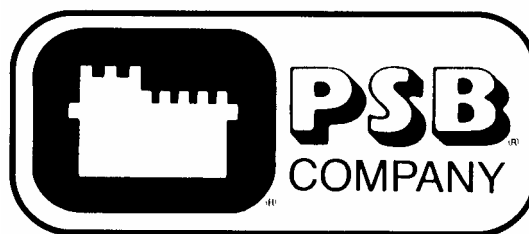
| ITEM # | PART # | DESCRIPTION | REQ. | ITEM # | PART # | DESCRIPTION | REQ. |
|--------|--------|---------------------------|------|--------|--------|-----------------------|------|
| 1 | 8411 | Hopper Lid | 1 | 21 | 84121 | Directional Lever | 1 |
| 2 | 15220 | Owner's Manual | 1 | 22 | 84122 | Flow Limiter Stop Nut | 1 |
| 3 | 8413 | Hopper | 1 | 23 | 84123 | Gasket | 1 |
| 4 | 8414 | Carry Strap | 1 | 24 | 84124 | Bolt | 1 |
| 5 | 8415 | Bolt | 1 | 25 | 84125 | Screw | 2 |
| 6 | 8416 | Support Bracket | 1 | 26 | 84126 | Adjuster Plate | 1 |
| 7 | 8417 | Nut | 1 | 27 | 84127 | Lid | 1 |
| 8 | 8418 | Nut | 12 | 28 | 84128 | Bolt | 1 |
| 9 | 8419 | Bolt | 12 | 29 | 84129 | Nut | 1 |
| 10 | 84110 | Bolt | 2 | 30 | 84130 | Bolt | 1 |
| 11 | 84111 | Nut | 2 | 31 | 84131 | Washer | 1 |
| 12 | 84112 | Agitator Knob (LH Thread) | 1 | 32 | 84132 | Nut | 1 |
| 13 | 84113 | Gasket | 1 | 33 | 84133 | Deflector Shield | 1 |
| 14 | 84114 | Volume Control Plate (A) | 1 | 34 | 84134 | Impeller | 1 |
| 15 | 84115 | Volume Control Plate (B) | 1 | 35 | 84135 | Base | 1 |
| 16 | 84116 | Flow Rate Lever | 1 | 36 | 84136 | Crank Handle | 1 |
| 17 | 84117 | Screw | 4 | 37 | 84137 | Gear Case | 1 |
| 18 | 84118 | Gasket | 1 | 38 | 84138 | Threaded Crankshaft | 1 |
| 19 | 84119 | Direction Controller | 1 | 39 | 84139 | Jamnut | 1 |
| 20 | 84120 | Gasket | 1 | 40 | 84140 | Washer | 1 |

PART OF OUR SERVICE IS PROVIDING REPLACEMENT PARTS,

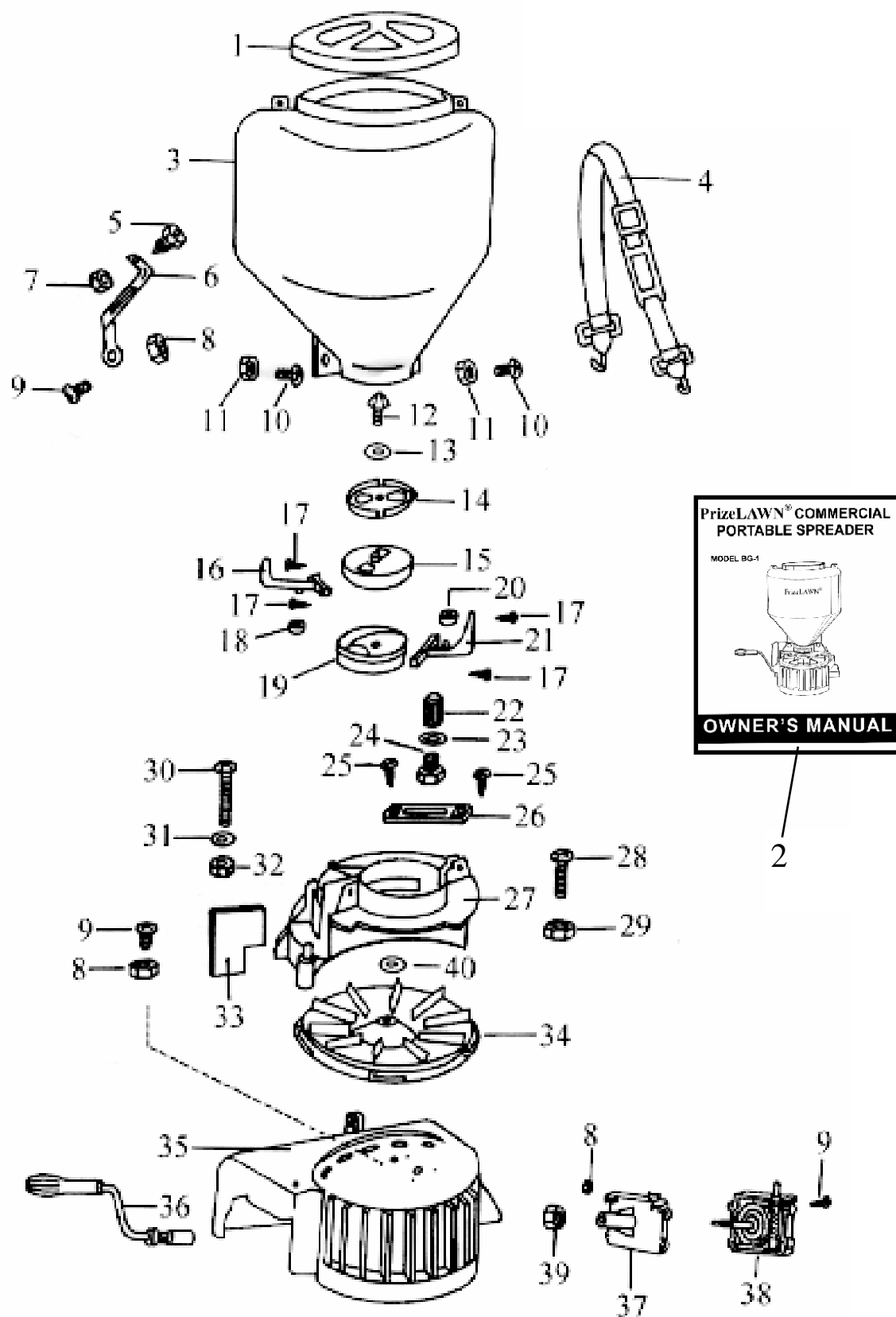
Parts may be obtained through your local distributor. Be sure to give the:

1. SPREADER MODEL NUMBER
2. SPREADER NAME
3. PART NUMBER
4. NAME OF PART AS SHOWN

**IF YOUR LOCAL
DISTRIBUTOR
CANNOT SUPPLY
PARTS, CONTACT:**



PSB Company
555 West Goodale Street
P.O. Box 1089
Columbus, Ohio 43216-1089
(614) 228-5781 EXT. 2655



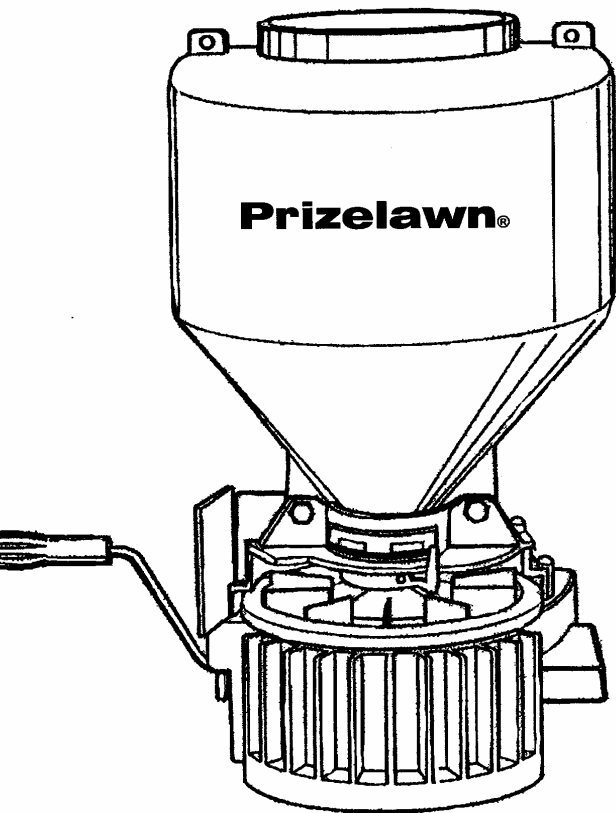
NOTES

[illegible]

Prizelawn® BG I

Another Quality

COMMERCIAL PORTABLE SPREADER

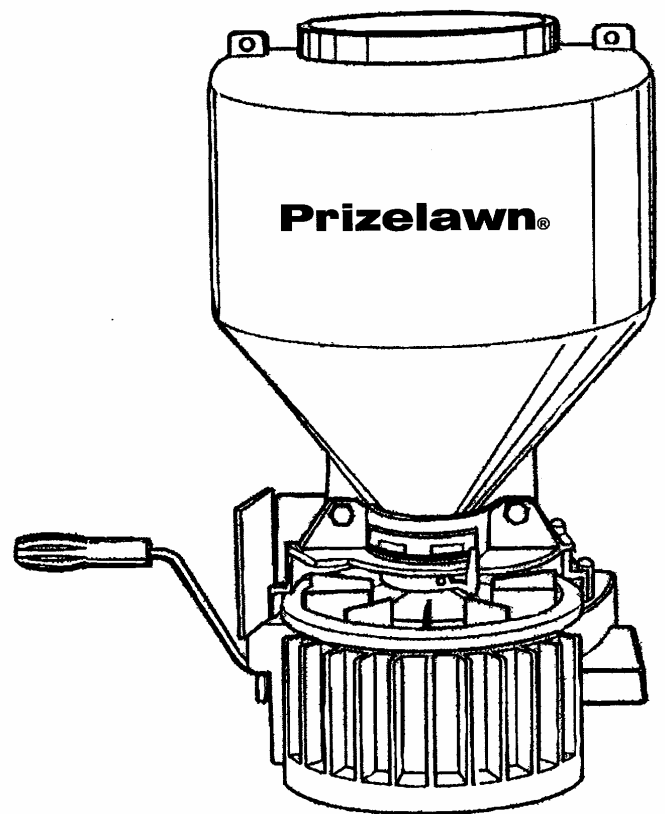


**PSB COMPANY
555 W. GOODALE ST.
COLUMBUS, OH. 43216-1089**

Prizelawn® BG

Another Quality

COMMERCIAL PORTABLE SPRE



**PSB COMPANY
555 W. GOODALE ST.
COLUMBUS, OH. 43216-1089**