

Produced For:  
**VOLUNTARY PURCHASING GROUPS, INC.**  
 230 FM 87 • BONHAM, TEXAS 75418  
 EPA Reg. No. 1021-1698-7401  
 EPA Est. No. 44446-TX-1  
 xx-1-89



**FIRST AID**

<b>If Swallowed:</b>	<ul style="list-style-type: none"> <li>• Immediately call a poison control center or doctor.</li> <li>• Do not induce vomiting unless told to do so by a poison control center or doctor.</li> <li>• Do not give any liquid to the person.</li> <li>• Do not give anything by mouth to an unconscious person</li> </ul>
<b>If In Eyes:</b>	<ul style="list-style-type: none"> <li>• Hold eye open and rinse slowly and gently with water for 15-20 minutes.</li> <li>• Remove contact lenses, if present, after the first 5 minutes. Then continue rinsing eyes.</li> <li>• Call a poison control center for treatment advice.</li> </ul>

Have the product container or label with you when calling a poison control center or doctor or going for treatment. For information regarding medical emergencies or pesticide incidents, call 1-888-740-8712.

**PRECAUTIONARY STATEMENTS  
 HAZARDS TO HUMANS AND DOMESTIC ANIMALS**

**CAUTION:** Causes moderate eye irritation. Avoid contact with eyes or clothing. Wash thoroughly with soap and water after handling and before eating, drinking, chewing gum, or using tobacco.

**PHYSICAL OR CHEMICAL HAZARDS:** Contents under pressure. Do not use or store near heat or open flame. Do not puncture or incinerate. Exposure to temperatures above 130°F may cause bursting.

**DIRECTIONS FOR USE**

It is a violation of Federal law to use this product in a manner inconsistent with its labeling.

**PROVIDES RESIDUAL AND QUICK KILL OF:**

Ants	Brown Banded Cockroach	Waterbugs	Firebrats	Spiders	Sowbugs
Cockroaches:	German Cockroach	Crickets	Fleas	Scorpions	Ticks
American Cockroach	Oriental Cockroach	Centipedes	Pillbugs	House Spiders	
Asian Cockroach	Palmetto Bugs	Carpet Beetles	Silverfish	Black Widows	

**FOR USE IN NON-FOOD AREAS OF:** Apartments, Atriums, Attics, Automobiles, Basements, Bathrooms, Boats, Bookcases, Cabins, Cafeterias, Campers, Cat Sleeping Areas, Chests, Closed Porches, Closets, Condominiums, Credenzas, Crematoriums, Day Care Centers, Decks, Dens, Dog Houses, Dormitories, Dressers, Drive-ins, Drugstores, Dumpsters, Factories, Floors, Food Processing Facilities, Funeral Parlors, Furniture, Garages, Garbage Cans, Gazebos, Homes, Hospitals, Hotels, Indoor Eating Establishments, Institutions, Jails, Kennels, Kitchens, Lanais, Living Rooms, Locker Rooms, Mausoleums, Mess Halls, Mobil Canteens, Mobile Homes, Morgues, Mortuaries, Nursing Homes, Office Buildings, Outdoor Eating Establishments, Public Buildings, Patios, Pet Bedding, Pet Carriers, Pet Grooming Shops, Pet Sleeping Areas, Pet Stores, Play Houses, Play Rooms, Porches, Prisons, Quonset Huts, Railroad Cars, Recreation Vehicles, Restaurants, Schools, Ships, Solariums, Sports Stadiums, Storage Areas, Sun Porches, Sun Rooms, Supermarkets, Taverns, Theaters, Trailers, Trucks, Utility Rooms, Verandas, Veterinary Offices, and Washrooms.

**HI-YIELD® D.I.Y. INDOOR PEST CONTROL** with NyLar® contains a unique combination of ingredients to provide quick knockdown and kill of the listed pests as well as an insect growth regulator which prevents immature cockroaches and fleas that are sprayed or that contact the spray residue from becoming adults. By preventing the development of adult cockroaches and fleas, the lifecycle is broken and reproduction will not occur. In the case of fleas, biting adult fleas will not result from treated immature fleas and the reproductive life cycle is broken. Treatment will last for 7 months for fleas and 4 months for cockroaches.

**SHAKE WELL BEFORE USE:** Avoid contamination of food and feedstuffs. Read entire label and follow all label directions. Use this product as a spot or crack and crevice treatment to localized areas where pests are seen or suspected. Spray surfaces until visibly wet. Spray pests directly, whenever possible. Keep children and domestic animals out of treated areas until the spray is dry.

**ANTS, COCKROACHES, CRICKETS, CENTIPEDES, FIREBRATS, PILLBUGS, SILVERFISH, SPIDERS, AND SOWBUGS:** Spray pests when they are seen and spray areas suspected of harboring these pests. Spray ant trails and spray cracks and crevices and points of entry into the house. Pay special attention to areas behind and beneath sinks, stoves, refrigerators, garbage containers, inside cabinets, along baseboards, in cracks and crevices in walls and floors, door and window sills and frames, around drains, pipes, plumbing, bookcases, storage and utility areas, and utility installation areas. Retreatment for roaches should not be needed for 120 days. For other pests, reapply as needed.

**CARPET BEETLES:** Thoroughly vacuum rugs and carpets before treatment. Remove the vacuum bag and place it in a separate bag and dispose of in outside trash. This helps prevent reinfestation from eggs and larvae vacuumed up. Spray backing of carpet and rugs, focusing on low traffic areas and areas under furniture. When dry, replace on floor and spray surface of carpet and rug, focusing on low traffic areas and areas under furniture and corners of rooms. Also spray baseboards.

**FLEAS AND TICKS:** Thoroughly vacuum all carpeting and fabric covered furniture, along baseboards, under furniture, low traffic areas, and areas where pets normally rest. Pet bedding should be removed and laundered. Replace pet bedding after treatment dries. Put vacuum bag in separate bag and dispose of in outside trash. Apply as a spot treatment to cracks and crevices, along baseboards, pet resting areas, and localized areas of floors and floor coverings where the pests are suspected. Do not treat pets with this product.

If flea and tick infested animals are transported in vehicles, use as a spot treatment to carpets and upholstered areas, paying attention to cracks and crevices.

To further protect your pet and your home from continuing reinfestation by fleas, you should use an EPA registered product to treat the animal, such as a dip product, a dust product or spray-on product, before the animal is allowed back into the house. You should also treat the area in the yard where the pet typically spends time with an EPA registered product for yard flea control. The pet, home, and yard should be treated at the same time.

**STORAGE AND DISPOSAL**

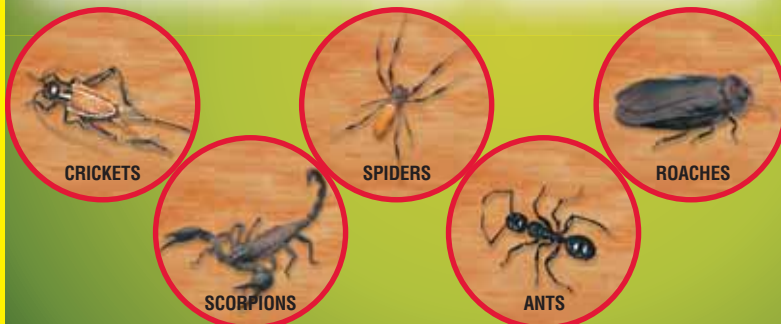
Do not contaminate water, food, or feed by storage and disposal. **Pesticide Storage:** Store in a cool, dry area. Always store pesticides in the original container. Store away from food and pet food.  
**Pesticide Disposal and Container Handling:** Do Not Puncture or Incinerate! Nonrefillable container. Do not reuse or refill this container. If empty: Place in trash or offer for recycling if available. If partly filled: Call your local solid waste agency for disposal instructions.

**Hi-Yield®**

**D.I.Y.**

**DO-IT-YOURSELF**

**Indoor Pest Control**



- Controls Ants, Cockroaches, Fleas, Spiders, And Other Listed Pests.
- Contains NYLAR® Insect Growth Regulator For Months Of Roach And Flea Control.
- A New And Unique Combination Of Insecticides.
- Gives 7 Months Control Of Fleas.
- Gives 4 Months Of Cockroach Control.

**ACTIVE INGREDIENTS:**

Pyrethrins.....	0.05%
Permethrin [(3-Phenoxyphenyl) (1RS)-cis-trans-3-(2,2-dichloroethenyl) 2,2-dimethyl-cyclopropanecarboxylate].....	0.20%
**N-Octyl bicycloheptene dicarboximide.....	0.25%
2-(1-Methyl-2-(4-phenoxyphenoxy) ethoxy) pyridine.....	0.02%
<b>OTHER INGREDIENTS:</b> .....	99.48%
	100.00%

\* Cis-trans isomers ratio: Min. 35% (+ or -) cis, Max. 65% (+ or -) trans  
 \*\* MGK® 264, Insecticide Synergist  
 MGK®, NYLAR® - Registered Trademarks of McLaughlin Gormley King Co.

**KEEP OUT OF REACH  
 OF CHILDREN**

**CAUTION**

See Back Panel  
 for First Aid  
 and Precautionary  
 Statement.

**NET WEIGHT 14 OZ. (397G)**