

USING THE PLANTER

The Cascata Rain Barrel has a built-in planter to make it even more beautiful. To use the planter simply drill the dimpled areas (using a drill and ¼" drill bit) inside the planter. Fill the planter with soil and place plants inside.

CARE AND MAINTENANCE

The Cascata Rain Barrel needs little care. There is an overflow outlet in the back to prevent water from overflowing out the top of the Rain Barrel. To divert the water away from your home simply attach a backwash hose and run through your garden or lawn for slow watering.

During the winter months, you can leave the rain barrel outdoors. Open the tap fully on the Cascata for the winter; when it is warmer out the water will drain from the barrel out the tap as water from the down spout fills the barrel. The portion of the rain barrel below the tap should always be full. Alternately, drain most of the water and cover the top so no new water can enter the barrel. You never want to drain the rain barrel fully - the rain barrel is light-weight, so may blow over easily in the winter if there isn't water holding it down.

WARRANTY

The Cascata Rain Barrel carries a 20 Year Limited Warranty on the barrel only. All accessories included with the Cascata Rain Barrel are NOT included in the Warranty. The Warranty covers manufacturers defects only. The Warranty does NOT cover neglect or owners misuse.

Proof of purchase must be presented to cover any warranties. If any parts are missing from your Cascata Rain Barrel, or if you have any problems with the installation, please call our customer service line at 519-623-7810.

WARNING

Basic electrical connections need to be made, take caution. Consult your local electrician for further instructions. A GFI electrical outlet should be utilized for this installation. The pump is not designed to run "dry" - water is required. Do not plug in pump prior to the filling of the rain barrel. Pump should be removed before the first frost, not to be left in rain barrel over winter.

HOW MUCH RAIN CAN YOU HARVEST?

To find out how much your roof will collect, you first need to calculate the catchment area:

(Length of house + eaves) x (Width of house + eaves) = Catchment

Example: (36 + 4) x (46 + 4) = 2000 sq ft.

1 inch of rainfall can provide an average of 600 gallons per 1000 sq ft. catchment area

(Catchment area / 1000) x 600 gallons = total gallons collected per 1" rainfall

Example: (2000/1000) x 600 gallons = 1200 gallons

To find out how much you will collect in a year:

Total gallons per sq. inch x average rainfall per year in inches = total gallons per year

Example: 1200 gallons per sq. inch x 20 inches of rainfall a year = 24 000 gallons



Harvesting Rainwater With Your Deluxe Cascata Rain Barrel



HOW YOUR PURCHASE IS IMPACTING THE ENVIRONMENT

- More than 70% of the Earth's surface is covered in water, yet only 2.5% of this supply is considered freshwater. The rest is found in the form of salt water in oceans.
- Of the freshwater that exists, most is locked up in glaciers and ice caps.
- Unfortunately, much of the small amount of freshwater is in danger of drying up through desertification or becoming too contaminated for human consumption.
- Changing our habits of water use can help abate this growing problem. Installing the Cascata Rain Barrel will help to reduce the amount of freshwater consumed for outdoor use.

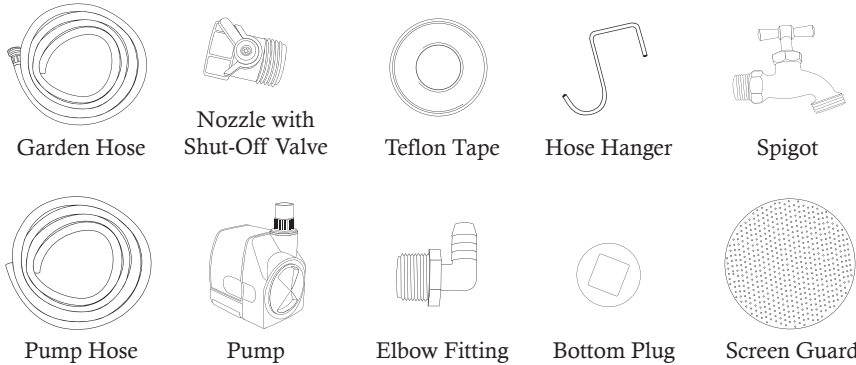


100 Pinebush Road
Cambridge Ontario Canada
N1R 8J8
1-800-984-9933

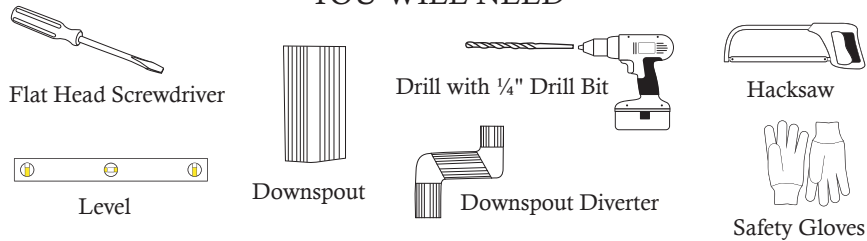
www.algreenproducts.com

Congratulations on the purchase of your new Deluxe Cascata Rain Barrel.

INCLUDED WITH DELUXE CASCATA RAIN BARREL



YOU WILL NEED



Deluxe Cascata Rain Barrel Instruction & Care Manual

The Cascata is an excellent way to conserve water. The water kept in the Cascata Rain Barrel is for gardening purposes only and should not be consumed by humans or animals.

INSTALLATION OF PUMP

1. Screw black drain plug into the bottom of the rain barrel. This should fit snugly to prevent leaking from the bottom of the rain barrel. Skip this step if you desire the garden hose attached to the rain barrel.
2. Remove pump from box and feed the electrical cord through the larger outlet in the back of rain barrel from the inside of the rain barrel.
3. Feed cut end of pump hose through the same larger outlet, this time from the outside of the rain barrel.
4. Insert the white elbow fitting into the threaded opening at the top of the pump.
5. Place a clamp over the cut end of pump hose and place the hose all the way onto the open end of the elbow fitting. Tighten the clamp with a flat head screwdriver.
6. Gently lower the pump to the base of the rain barrel; try to have the pump sitting in an upright position. Warning: Do not plug in pump prior to the filling of the rain barrel. The pump is not designed to run "dry." To run off the pump, unplug the electrical connection. An extension cord will be required in order for the pump to reach the GFI outlet. Keep the connection between pump and extension dry. Electrical tape or a plastic fitting can be used to prevent corrosion (from moisture) in the prongs of the plug.

INSTALLATION OF RAIN BARREL

7. Choose a location for the Cascata Rain Barrel where there is a downspout nearby.
8. Place the Downspout Diverter on the Cascata and hold it up to the Downspout and mark a line with a pencil.
9. Using the Hacksaw cut a straight line at the mark you just made.
10. Place the Screen Guard in the open area on the top of the Cascata Rain Barrel.
11. Attach the Hose Hanger to the Cascata Rain Barrel by putting it onto the ledge where the dimple is on the Rain Barrel under the crown planter.
12. If you desire the garden hose attached to the Rain Barrel, attach the Nozzle with Shut-off Valve to the threaded end of the hose. Attach the cut end of the hose to the base of the Cascata Rain Barrel: place the clamp over the hose then place over the elbow connector. Using a Flat Head Screwdriver tighten the clamp over the hose and the elbow connector. Then screw the threaded end of the elbow connector into the hole on the base of the Cascata.
13. Attach the Spigot to the rain barrel by screwing it into the body of the rain barrel. To prevent leakage, apply teflon tape to the spigot's threads, before screwing it into the fitting.
14. Once the rain barrel is sufficiently filled, plug in extension cord and begin watering with garden hose. Wrap the hose around regular hose hanger for aesthetics and easier storage. Unplug pump when watering is completed.

